

The Bossa Nova

Lesson #1

(SVDL52)

John Xepoleas

Welcome to the first lesson in my 3-Part “Bossa Nova” lesson series. In this series, I will teach how to play the basic Bossa Nova and give you some tools to help develop a good feel for the groove. I will also teach you some nice sounding snare drum variations, help you with your left hand independence and teach you transitions and fill concepts.

♩ = 112-140

Basic Bossa Nova Pattern



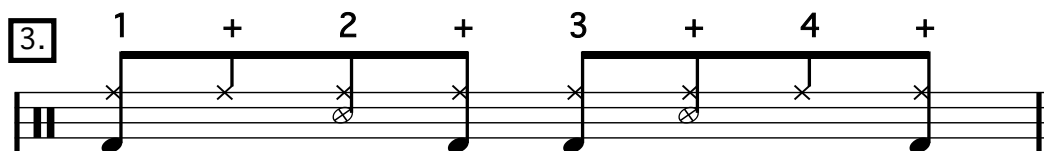
To start, let's get a good feel for the bass drum and hi-hat parts. The bass drum is the pulse of this groove and needs to be solid and consistent at all times. Play the hi-hat lightly. Start slowly and practice with a metronome.



Now we'll add the snare drum part. To begin, we'll play the snare on counts 2 & 4 using a rim click.



For this version we'll play the snare on the 2 and the “and of 3”. This is the snare drum rhythm that appears in the second bar of a basic Bossa Nova



Now we'll combine the two previous examples to create a groove I call the “Rock Bossa”. This groove is a nice segue to learning the basic Bossa Nova and will work just fine when played in Bossa Nova song.

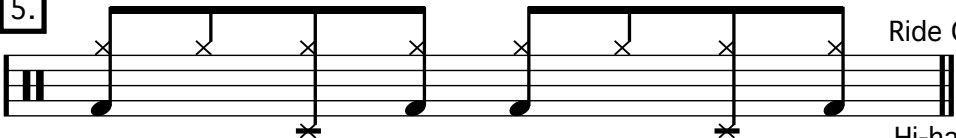
Rock Bossa



Bossa Nova - Lesson #1 - Page 2

The right hand part for the Bossa Nova can also be played on a ride cymbal. When doing so, your hi-hat will play on counts 2&4 with your foot. To start, we'll practice this pattern without the snare part.

5.

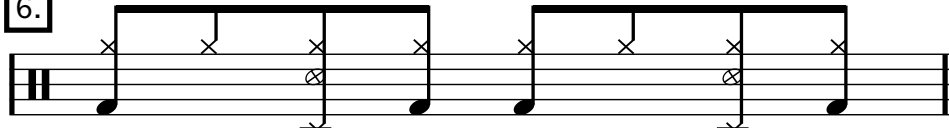


Ride Cymbal
Hi-hat with foot

Detailed description: This musical notation shows two staves. The top staff is labeled 'Ride Cymbal' and contains two measures of music. Each measure has a bar line at the beginning and end, with four 'x' marks indicating notes on the 2nd, 3rd, 4th, and 5th lines of the staff. The bottom staff is labeled 'Hi-hat with foot' and contains two measures of music. Each measure has a bar line at the beginning and end, with a quarter note on the 2nd line and a quarter note on the 4th line. There are asterisks below the 2nd and 4th lines of the bottom staff, indicating where the foot should be placed.

Next, we'll add the rim click to the above pattern. Be sure that the rim click locks in with the hi-hat on counts 2&4.

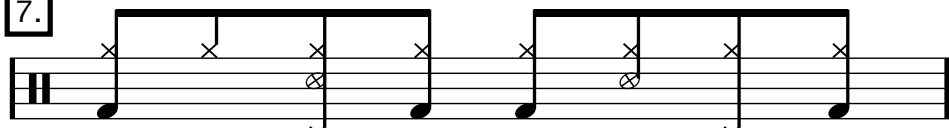
6.



Detailed description: This musical notation is similar to exercise 5, but with an additional note on the top staff. In the first measure, there is a note on the 3rd line. In the second measure, there is a note on the 4th line. These notes are marked with an 'x' and a circle, representing rim clicks. The bottom staff remains the same as in exercise 5.

Now, let's play the version with the snare on the 2 and the "and" of 3.

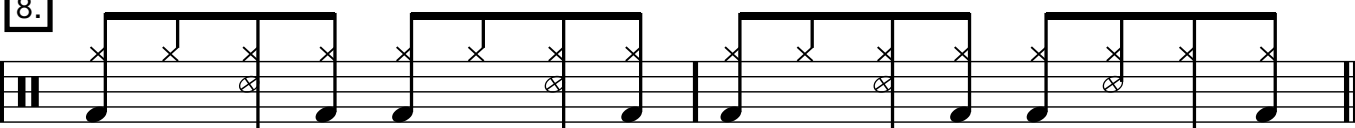
7.



Detailed description: This musical notation is similar to exercise 6, but with an additional note on the bottom staff. In the first measure, there is a snare drum note on the 2nd line. In the second measure, there is a snare drum note on the 3rd line. These notes are marked with an 'x' and a circle, representing snare drum hits. The top staff remains the same as in exercise 6.

And last but not least, we'll play the "Rock Bossa" with the right hand on the ride cymbal and the hi-hat on 2&4.

8.

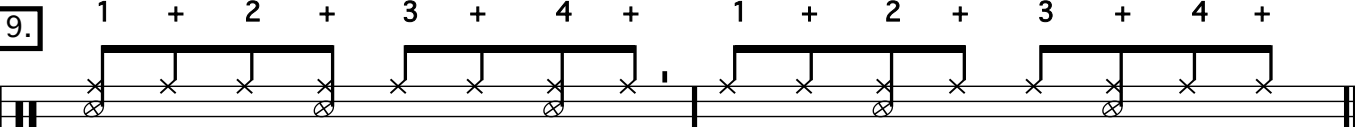


Detailed description: This musical notation shows two staves. The top staff is labeled 'Ride Cymbal' and contains four measures of music. Each measure has a bar line at the beginning and end, with four 'x' marks indicating notes on the 2nd, 3rd, 4th, and 5th lines of the staff. The bottom staff is labeled 'Hi-hat with foot' and contains four measures of music. Each measure has a bar line at the beginning and end, with a quarter note on the 2nd line and a quarter note on the 4th line. There are asterisks below the 2nd and 4th lines of the bottom staff, indicating where the foot should be placed.

To help get a good feel for the basic Bossa Nova snare drum pattern we'll only play the snare and hi-hat parts and leave off the bass drum for now. Start slowly, count out loud and practice the pattern until it becomes muscle memory.

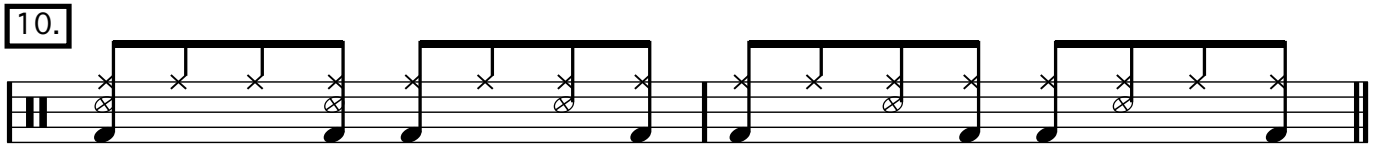
9.

1 + 2 + 3 + 4 + 1 + 2 + 3 + 4 +

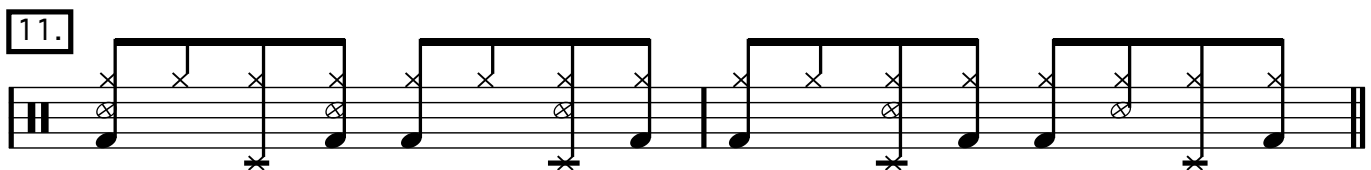


Detailed description: This musical notation shows two staves. The top staff is labeled 'Ride Cymbal' and contains two measures of music. Each measure has a bar line at the beginning and end, with four 'x' marks indicating notes on the 2nd, 3rd, 4th, and 5th lines of the staff. The bottom staff is labeled 'Hi-hat with foot' and contains two measures of music. Each measure has a bar line at the beginning and end, with a quarter note on the 2nd line and a quarter note on the 4th line. There are asterisks below the 2nd and 4th lines of the bottom staff, indicating where the foot should be placed. Above the notation, the counts '1 + 2 + 3 + 4 +' are written, indicating the snare drum pattern.

Let's add the bass drum to the previous pattern and play the full Bossa Nova groove as written at the beginning of the lesson.



Once you are comfortable playing the pattern on a closed hi-hat practice it with your right hand on the ride cymbal and play your hi-hat on 2&4.



When the song requires a softer touch you can play the right hand part with a brush on the snare drum. For this version we'll play the eighth notes using a side-to-side sweeping motion.



Suggested Listening

Antonio Carlos Jobim - "Wave"

Stan Getz & Joao Gilberto - "Getz/Gilberto"

Eliane Elias - "Sings Jobim"

Charlie Byrd & Stan Getz - "Jazz Samba"

Stan Getz & Luiz Bonfá - "Jazz Samba Encore"